

Easya



 **FOCAL**[®]
THE SPIRIT OF SOUND

Easya



Wireless high-fidelity sound

Easya is Focal's new innovation straddles the Classic and New Media Collections. Indeed, with this new generation of wireless amplified loudspeakers, it was our duty to combine the ease of use with the same remarkable sound quality as our traditional loudspeakers.

This loudspeaker system bearing the "Made in France" label is composed of a Hub and two amplified floor-standing loudspeakers, providing optimal acoustic quality. Two-and-a-half-way bass-reflex loudspeakers, built-in 85W RMS amplifier, Polyglass cone speaker drivers, new TNV2 Aluminium/Magnesium inverted dome tweeter with Poron suspension...

Easya embodies all the traits of a 100% Focal, high-fidelity loudspeaker providing a seamless soundstage with admirable spatialisation, an essential quality to ensure your listening pleasure.

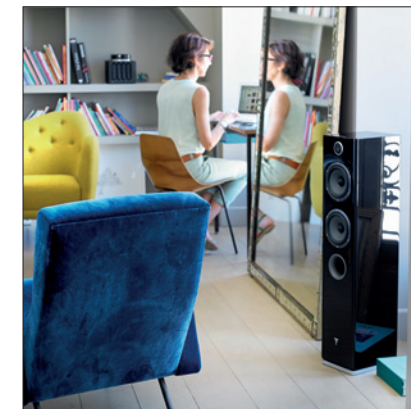
The installation and use of Easya correspond perfectly with the new uses of dematerialised music: everything is directly built into the loudspeaker, so external amplifiers or cables are no longer required.

The wireless Hub is a digital transmitter sending sound signals to the loudspeakers, and thanks to Kleer® technology, there's no loss in quality or compression. What distinguishes Easya even more in Focal's range

of products is the strong identity of its design, setting it apart from the previous traditional ranges.

The curved design, created by the design firm Pineau & le Porcher, the Aluminium stand and the built-in LED, make Easya a product with definite high-perceived value.

Focal has taken a step forward with Easya, focusing on the ways we consume dematerialised music today, and on making Focal's famous "Spirit of Sound" more accessible than ever before.





Multiple sources for optimal sound quality

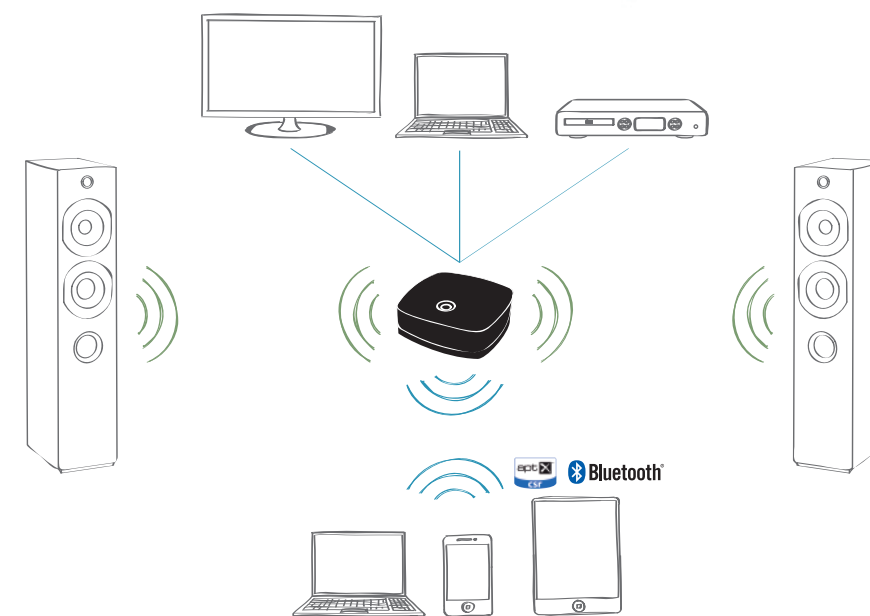
Easya distinguishes itself from other traditional loudspeakers through its ease of installation and use associated with Focal's "Spirit of Sound". Things have never been easier: just plug the loudspeakers and the Hub into the mains and voilà! No set-up is required.

You can connect all your audio sources to the Hub: CD/mp3/DVD or Blu-ray player, games console, computer and tablet. The Hub will transmit sound from all your sources in CD quality without any compression or loss of quality.

For even more freedom, you can also play your music without constraints, thanks to *Bluetooth*® aptX® wireless technology, from all your portable devices: smartphone, tablet or laptop (Mac or PC), whilst still preserving good sound quality.

The remote makes it easy to control the Hub: play/stop, source selector, volume, activate *Bluetooth*®, and management of your playlists (previous/next track, play/pause) when a computer is connected to a USB input or via *Bluetooth*®.

In order to make the system as simple as possible, all the functions of the Focal remote can be programmed into any infra-red remote, thanks to the "learning remote" function.

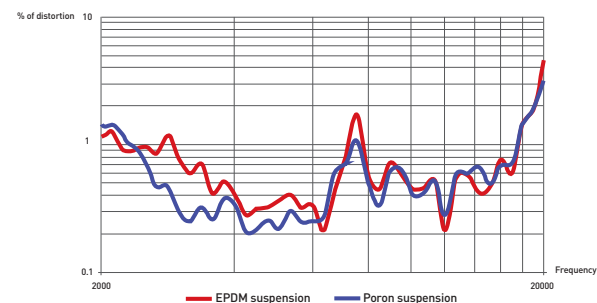




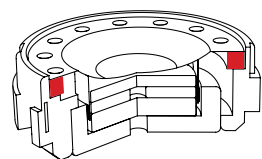
A true 100% Focal loudspeaker

All Focal's historic technologies have gone into the design of Easya: Polyglass cone and new TNV2 Aluminium/Magnesium inverted dome with Poron suspension. The latter innovation has enabled us to considerably enhance the performance of the famous TNV tweeter used for the former Chorus V line.

The advantages of using Poron in this tweeter are obvious in terms of linearity and reduction of distortion. The result is a silkier, better defined sound with greater harmonic richness, as well as a more precise sound image.



> Distortion levels directly affect sound quality. The use of Poron has reduced the distortion by half in the tweeter's. Bandwidth between 2 - 4kHz: an area where the sensibility of the ear is very high.



> Cross-section of the TNV2 tweeter. Poron's physical properties provide improved control over the mobile assembly in the magnetic parts.



The Polyglass cone has been a Focal tradition for the last 30 years. Incessantly improving, it has matured today to a very high level of performance. The cellulose fiber cone offers renowned lightness and damping characteristics. But our special surface treatment of silica micro-balls gives the cone

a huge increase in rigidity for a negligible increase in mass. The definition and dynamic capacity of this cone, when combined with a very powerful magnet (another Focal tradition), generate a very fine reproduction, with an exceptionally rich midrange.

Easya is a powered and wireless sound system. It combines all the qualities of a classic high fidelity speaker with the new ways of enjoying music. Easya features a digital amplifier with a wireless receiver that can be linked with the Hub.

With Easya, Focal has created a simple-to-use system without the limitations of a separate system. Recommended for rooms measuring from 20m² and for a listening distance of 2.5m.

Easya	Powered wireless 2-1/2 way bass reflex floor-standing
Speakers	Polyglass woofer 5" (13cm) Polyglass bass/midrange 5" (13cm) Al/Mg TNV2 inverted dome tweeter (25mm)
Frequency response (+/- 3 dB)	50Hz - 28kHz
Low frequency point - 6 dB	43Hz
Amplifier power (RMS)	85W - 4 Ohms @ 1% THD+N
Mains voltage	100 - 240V
Mains frequency	50 / 60Hz
Dimensions (H x W x D)	35 ^{5/8} x6 ^{3/4} x9 ^{7/16} " (905x172x240mm)
Net Weight	17kg / 37.5lbs

Finishes available



White High Gloss



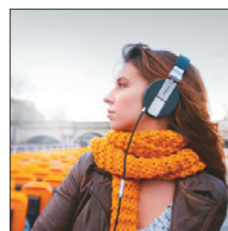
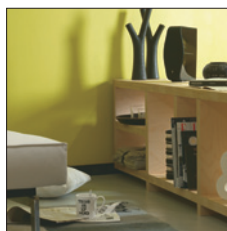
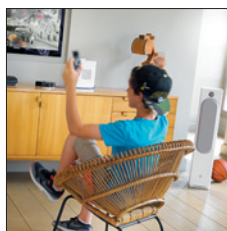
Black High Gloss

The Hub is a digital wireless transmitter which transmits the audio to the loudspeakers in a quality of sound that is absolutely identical to that of a CD.

Thanks to its numerous inputs, the Hub connects Easya or any other compatible wireless device to all audio sources : smartphone, tablet, computer, TV and CD player... It is also compatible with the *Bluetooth*® aptX® technology.

Hub	Digital wireless transmitter
Transmission type	Digital
Transmission signal frequency	2.4GHz Klear® compatible
Range Around	10m without obstacle
Frequency response (+/- 3 dB)	0Hz - 20kHz
Sensitivity	87dBm
Distorsion	< 0.1 % (20Hz - 20kHz)
Sampling Rate	44.1kHz
Resolution	16 bits
Mains voltage	100 - 240V
Mains frequency	50 / 60Hz
Power consumption (Stand by mode - ON)	1.6W / 2.5W
Wireless Inputs	<i>Bluetooth</i> ®
Digital Inputs	Coax ; Toslink
Analogue Inputs	Jack 3.5mm / RCA
External sound card	USB input
Dimensions (H x L x P)	1 ^{15/16} x5 ^{11/16} x5 ^{2/3} " (49x145x144 mm)
Net weight	300g / 0.66lbs











www.focal.com

FOCAL® is a trademark of FOCAL-JMLAB®



PC1212
 R5484 PC1212

 3544053825488

EXP - GB

Focal-JMLab® - BP 374 - 108, rue de l'Avenir - 42353 La Talaudière cedex - France - Tel . +33 (0) 477 435 700 - Fax + 33 (0) 477 435 704 - © Focal-JMLab 2012 - SCAB-121008/5

Focal®, Focal The Spirit of Sound®, Utopia®, Dôme®, Bird®, Electra, Chorus, Easys, Aria, Sib&Co, XS Book, XS 2.1, Spirit One, Spirit Classic, CMS, SM6, SM9, Spirit Professional, DFS®, Elite, K2 Power, Utopia Be, Integration, Plug&Play, Universal, Performance, Access, Expert, DSA 500 RT, "W", Gamma Structure, Focus Time, Power Flower, Be Tweeter, IAL2, Multiferrite, EM, MDS, Flax, Polyglass, OPC, Powerflow, Wall Boost Control are trademarks or registered trademarks of Focal-JMLab®.

Due to constant technological advances, Focal-JMLab® reserves its right to modify specifications without notice.
 Images may not conform exactly to specific product - Photos L'Atelier Sylvain Madelon